



Creating Programs That Support Every Child's Development

How curriculum, lesson planning, and assessment are evolving across childcare, after-school, tutoring, and specialized support programs.

WEBINAR · JUNE 25, 2026

Today's Presenters



Susan Gibbs

Education Consultant



Heather White

Montessori Teacher Educator



Laura Delay

BCBA & Clinical Consultant

1. What type of program do you run?

A Childcare Center

B Drop-in Center

C Montessori Program

D Before / After School Program

E ABA Clinic

Today's Agenda

01

What Programs Are Seeing

Developmental variability across childcare segments

02

The Development Cycle

Curriculum → Lesson Planning → Assessment

03

Pillar 1: Curriculum

Supporting different developmental pathways

04

Pillar 2: Lesson Planning

Dynamic, individualized operational guides

05

Pillar 3: Assessment

Documentation, visibility, and family trust

06

The Future

Greater individualization and visibility

Directors Across Segments Are Navigating Greater Developmental Variability

- Wider developmental differences within the same age groups
- Different communication and learning styles
- Increased emotional regulation support needs
- Greater family expectation for visibility and communication
- Staff balancing individualized support with group experiences
- More documentation and accountability expectations

CHILDCARE

Balancing developmental milestones across broad learning styles

AFTER-SCHOOL

Managing varying emotional energy and engagement after the school day

TUTORING

Supporting children progressing at different academic paces

What is the BIGGEST developmental challenge your program faces today?

A

Supporting children with diverse learning styles in the same group

B

Helping staff adapt and individualize their approach

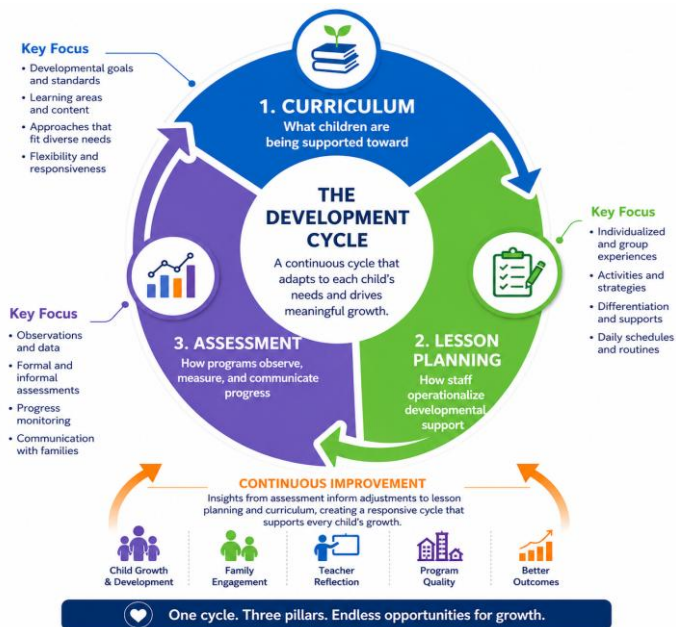
C

Communicating developmental progress clearly to families

D

Documenting observations consistently across staff

Every Program Supports Growth Through a Continuous Development Cycle



The cycle continuously adapts based on child observations, participation, developmental progress, and family communication.

Child-Serving Programs Organize Developmental Support in Different Ways

Traditional Childcare

*Curriculum → Lesson Planning → Assessment
→ Curriculum Adjustments*

ABA Programs

*Assessment → Individual Goals → Lesson
Planning → Ongoing Measurement*

Tutoring Programs

*Assessment → Skill Gap Identification →
Instruction → Reassessment*

Montessori Programs

*Observation → Prepared Environment → Child-
Led Progression → Observation*

After-School Programs

*Engagement Goals → Activities → Observations
→ Program Adjustments*

Different operational models still rely on the same foundational pillars: curriculum, planning, observation, and developmental visibility.

How would you describe your program's current approach to lesson planning?

A We use a fixed, standardized lesson plan format

B We have templates but staff adapt them regularly

C Plans are mostly informal or staff-driven

D We're actively working to improve our planning process

Lesson Planning Is Becoming More Dynamic and Individualized

Planning for mixed developmental levels

Teacher collaboration and continuity

Observation-driven adjustments

Balancing structure with individualized support

Flexible activity adaptation

Communication between classrooms and families

Lesson plans increasingly function as living operational guides rather than static schedules.

Assessment Is Expanding Beyond Traditional Evaluation Models



Formal Assessments



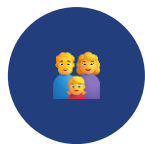
Developmental Observations



Participation Tracking



Journaling & Portfolios



Parent Communication



Individualized Growth Documentation

Everyday Interactions Now Play a Larger Role in Demonstrating Growth



Daily observations support continuity between staff



Journals help communicate meaningful progress to families



Documentation supports conferences and developmental reviews



Photos and notes provide contextual understanding



Families increasingly expect visibility into the child experience

Programs that organize developmental visibility effectively strengthen:



Family Trust



Staff Consistency



Program Differentiation



Long-Term Retention

The Industry Is Moving Toward Greater Individualization and Visibility

More adaptive programming models

Stronger developmental communication

Increased parent transparency expectations

Connected operational systems

Greater staff coordination

More individualized support approaches

The Shared Challenge — and Opportunity

Every child-serving organization supports growth differently.

The shared challenge across segments is building systems that help teams:

- ✓ Organize developmental observations
- ✓ Support individualized learning pathways
- ✓ Communicate clearly with families
- ✓ Demonstrate meaningful progress over time

Let's Continue the Conversation

If your team is exploring ways to better organize developmental visibility, communication, planning, and operational continuity:

[Schedule a Demo](#)

icaresoftware.com

Q&A

Questions & Answers

*Submit your questions using the Q&A or chat function.
We'll do our best to answer as many as possible.*